



*It's where renovation begins.*

[www.renovation.sg](http://www.renovation.sg)

## 'TIS THE SEASON TO BE **HOME**

» PLAN YOUR  
DREAM WALK-IN  
WARDROBE:

5 Questions to Get You Started

» BUY THE BEST  
OVEN FOR  
YOUR KITCHEN:

Must-know Pros & Cons

PAGE 38

**MYSTERY  
SHOPPERS**

BE OUR  
**MYSTERY SHOPPER**  
& WIN CASH REBATE!

# HÄFELE

**NEW**

SLIMMER  
LIGHTER  
SIMPLER

## NEW FREEDOM IN MOTION. FREE.

THE FLAP DOOR FITTING ASSORTMENT  
BY HÄFELE

ENGINEERED  
BY HÄFELE

Häfele Singapore Pte Ltd  
1 Kaki Bukit Road 1, #01-27/28, Enterprise One,  
Singapore 415934  
Phone: +65 6848 9075 Fax: +65 6848 9076  
Email: showroom@hafele.com.sg

# OnePiece Painting Gallery

500 ART PIECES  
IN STORE



LARGEST  
AFFORDABLE ART  
COLLECTION



**ART**  
FOR  
EVERYONE

AFFORDABLE  
BEAUTIFUL  
CANVAS ART



INTERIOR  
DESIGNERS'  
CHOICE

[www.onepiecepainting.com](http://www.onepiecepainting.com)

ONEPIECE PAINTING PTE LTD  
322 JOO CHIAT ROAD, SINGAPORE 427579

Operating Hours: Tuesday-Sunday (12pm-8pm)





# GETTING FIBRE BROADBAND FOR YOUR HOME?

The last thing you want is to see unsightly cables lying around the corners of your home.

## BENEFITS OF CONCEALED WIRING

- Prevents unsightly cables from spoiling the aesthetics of your home.
- Prevents you from tripping on exposed cables.



## CHOICE OF FIBRE CABLE

To enjoy optimum fibre speed, get Cat6 wiring cables when wiring your home.

## BENEFITS OF SURFING AT AN AMAZING SPEED WITH SINGTEL FIBRE BROADBAND

- Surf web content at blazing speeds with no international bandwidth cap.
- Access multiple bandwidth-intensive applications such as data downloading or video streaming while maintaining high speeds.

## SINGTEL INSTALLATION SERVICES

We provide a holistic end-to-end installation to ensure that your broadband connection runs seamlessly to all your devices.



### Free configuration for multiple devices

- Installation of Optical Network Terminal (ONT), Wireless Modem and Set-Top Box
- Set-up of up to 3 devices (smartphone, tablets or laptop) to your modem's Wi-Fi



### Wiring expertise for better cable management

- Wired connection from Wireless Modem to PC of up to 35 meters
- Wired connection of Wireless Modem to 1st Set-Top Box anywhere in the house



### On-site testing and maximisation of Wi-Fi strength

- Testing and demonstration of all connected devices

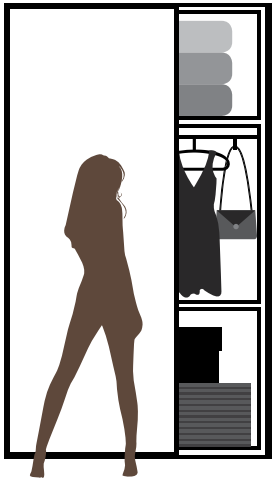
## WE UNDERSTAND THAT EVERY HOME IS DIFFERENT

If you need personalised advice on wiring your home for Fibre Broadband, our installation experts will be happy to visit you.

Simply call us at **6538 3383** and quote '**RenoNation Magazine**' to make an appointment for free wiring consultation today!



# COVER STORY



p10

## Closet Fantasy

5 SMART DESIGN QUESTIONS ABOUT WALK-IN WARDROBES YOU SHOULD KNOW



14» **ON-SITE CHRONICLES™**  
From Nightmare to Dream Home Part 2

20» **HOME HUB**  
Know Your Oven

24» **VERSA STYLE**  
Window Dressing

28» **FLAVOUR OF THE MONTH**  
Fly Me on a Magic Carpet

31» **HOME IMPROVEMENT**  
How to Care for Your Mattress & Pillows to Get Better Sleep

35» **TRENDS ON THE GO**  
Experience Your Best Night's Sleep

36» **GREEN CONSCIOUSNESS**  
Don't Throw, Recycle Instead!

40» **PROPERTY MARKET**  
Good Time to Purchase a House



42» **AESTHETIC VALUE**  
Store-It-Yourself

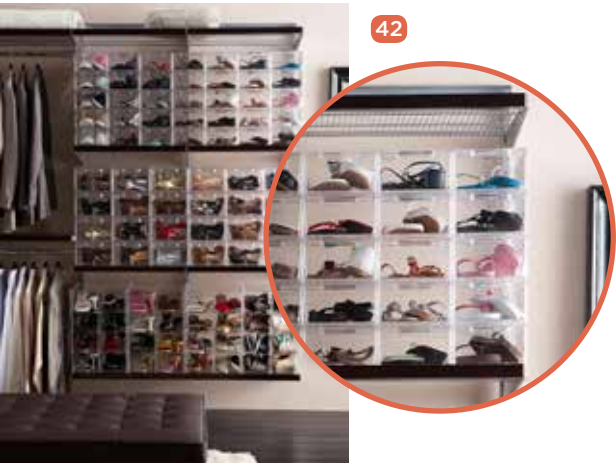
46» **SHOW & TELL**  
Capturing Life Through Paint

50» **NEW KIDS ON THE BLOCK**  
A Simple Life

52» **LUST.WISH LIST**  
Of Bones & Pearls

56» **GEOMANCY**  
The Feng Shui Trinity to Better Well-being and Health

62» **STOCKIST**



sales@merlin.com.sg

**MERLIN** ESTD. 1942  
**GALLERY**

www.merlingallery.com

美倫 **MERLIN**  
美倫框業與藝術品有限公司  
MERLIN FRAME MAKER & ART GALLERY PTE LTD  
ESTD. 1942

www.merlin.com.sg

**Merlin Gallery**  
292 River Valley Road, Lv 2 & 3  
Singapore 238333  
+65 6235 2238

**River Valley**  
292 River Valley Road,  
Singapore 238333  
+65 6735 1866

**Holland Village**  
36 Lorong Mambong,  
Singapore 277693  
+65 6467 2522

**Paragon**  
290 Orchard Road #05-30,  
Singapore 238859  
+65 6835 2988

**Tanglin Shopping Centre**  
19 Tanglin Road #02-46,  
Singapore 247909  
+65 6738 1161



## DECK THE HALLS WITH LOVE &amp; JOY

It's November! Are you feeling the seasonal pressure yet? Well, before you panic, remember that Christmas is ultimately about spending time with your loved ones at **home**. In fact, there is no greater joy than dolling up your home in a way that fires up your imagination. Even if you don't have a lot of furnishings, accessories like **rugs** (p28) and **window dressing** (p24) can transform your room from drab to fab. Stylish yet **functional storages** are just as important too; that's why we sourced for spacious solutions that you'll be proud to display at home (p42).



There's more to be savoured in this issue so have fun reading and do share with us your decorating pictures on Facebook. Till then, have **MERRY CHRISTMAS & A WONDERFUL START TO 2015!**

Navajo (Scion)  
rug from Goodrich  
Gallery, p28

Editor,

*Lilian*

Lilian Wu

## DO YOU HAVE SOMETHING TO SAY ABOUT OUR MAGAZINE?

Want to recommend a little-known shop that you frequently visit for your home decorating needs? We'd love to hear from you! Email your thoughts to [editorial@renonation.sg](mailto:editorial@renonation.sg). Who knows? We might love your letters so much that we'll feature them in the next issue!

All information is correct at time of printing. While every reasonable care has been taken to ensure the accuracy and objectivity of the information contained in this publication, neither the publisher, editor and their employees and agents can be held liable for any errors, inaccuracies and/or omissions, howsoever. Opinions expressed in the magazine are not necessarily those of the publisher. We shall not be liable for any actions taken based on the views expressed, or information provided within this publication. You should always seek professional advice from the appropriate advisor, professional or institution. Products featured are subject to availability and/or while stocks last. Prices are subject to change. No part of this publication may be reproduced, either in print or on the Internet, without prior written permission from the publisher. All rights reserved. ©2013-14. Printed by Times Printers Pte Ltd.



## PUBLISHER

Offsprings Group Pte Ltd

## MANAGING DIRECTOR

Kenneth Tan

## EDITORIAL

For editorial matters  
([editorial@renonation.sg](mailto:editorial@renonation.sg))

## EDITOR

Lilian Wu

## ADVERTISING &amp; MARKETING

For advertising enquiries  
([support@renonation.sg](mailto:support@renonation.sg))

## CREATIVE DESIGNER

Sophia Basuni

## BUSINESS DEVELOPMENT TEAM

Ek'e Teo, Kenneth Tan

RenoNation is published by  
**Offsprings Group Pte Ltd**  
143 Cecil Street #03-01  
GB Building, Singapore 069542  
Tel: +65 6225 3132  
[www.renonation.sg](http://www.renonation.sg)

**MEYER**<sup>®</sup>  
A WORLD LEADER IN COOKWARE

# SPICE UP YOUR KITCHEN WITH RED

## TRUSTED GLOBALLY

Meyer has a global presence and is the largest in cookware in the U.S., United Kingdom, Canada, and Australia.

## QUALITY

Our own factories in Italy, Thailand, and China produce cookware using carefully picked materials to ensure the best quality.

## VERTICAL INTEGRATION

We make everything ourselves, from the base materials to the finished product. Even our aluminum is from our own rolling mill.

## BRING YOUR KITCHEN TO LIFE

with the Italian red collections from Meyer. We based this beautiful collection on the colours of the Italian lifestyle, reminiscent of fresh cherry tomatoes. Crafted with a custom alloy of heat-conductive aluminium, we created this set out of our best selling pieces from Asia, making sure that it was compatible with all cooking surfaces, including induction. Perfect for cooking everything that one household would need, this collection combines excellent cooking performance with a splash of Italian red to enhance your kitchen.



ITALIAN RED COLLECTION  
MEYER | A World Leader In Cookware

# 5 Smart Design Questions About Walk-in Wardrobes You Should Know

Dreaming of a smartly designed yet space-efficient walk-in wardrobe that can give Carrie Bradshaw a run for her stilettos? Then ask yourself these 5 questions as you plan out the blueprint for your personal paradise. **By Lilian Wu**

A walk-in wardrobe may be commonly seen as a woman's domain, but it appeals to the man too—especially one who has a collection of clothes and accessories to rival any self-respecting clothes horse. The wardrobe or closet is thus the most important place for storage and display, but it shouldn't be blindly designed either so here is a list of important questions that you should consider before starting work on the walk-in wardrobe.

## WHAT ARE YOUR WARDROBE HABITS?



When it comes to dressing up, no one has the exact same habits as the other person. That's why it's important to take your lifestyle into account when it comes to designing the walk-in wardrobe of your dreams. Think about the clothes you normally wear and design the space accordingly to serve you in the most efficient manner. For example, do you have more clothes that you hang up than stack on shelves? Then set aside more space for hanging storage, but don't forget that you still need room for shelves and drawers as well. Since space is pretty much a valuable real estate in any wardrobe, make full use of all the vertical space you have within the room, from floor to ceiling.

LEFT:  
1. Least used items  
2. Most used items  
3. Items you don't use as often



» This means that you're advised to place items you use most often at eye level while those that see less usage should take up the lower shelves. The winter clothing or seasonal belongings that you only take out once a year for your winter wonderland holidays is best kept away in the top shelves where they won't get in your way.



### HOW MUCH LIGHT DO YOU NEED?

The last thing you need is casting a shadow on the contents of your wardrobe while you struggle to get dressed in the morning. Adequate lighting is important, which is why you shouldn't be content with a mere ceiling light in the walk-in wardrobe. As you may already know, ambient light in the form of the central light fixture only provides the overall illumination in the room. When you stand in front of the wardrobe, you'll be blocking the light so it's bound to make things look darker than they should.



TOP: Illuminated wardrobe rail by Hafele Singapore (price upon request)

#### TIPS

- » As such, you should look into investing in more than one type of light:
1. **Ambient:** fills in for natural light so it provides the overall illumination via a central light fixture e.g. chandeliers
  2. **Accent:** adds interest to a certain area or to highlight certain decorations like your huge collection of luxury watches e.g. spotlights
  3. **Task:** provides light for everyday tasks such as grooming or picking out the trendiest outfit from your wardrobe e.g. cabinet lighting

### DO YOU HAVE ENOUGH PRIVACY OR TOO MUCH SUNLIGHT?

RIGHT:  
Image by Voila Design



If your walk-in wardrobe is in the adjoining room, chances are you may have to contend with privacy issues. To protect your sacred sanctum from prying eyes, you can either install window films or even DIY your own screen using your favourite designs printed on vinyl stickers. Not sure where to get them printed? You can check out places like Sunshine Plaza for a wide range of printers to do the job for you.

#### TIPS

Not much of a vinyl sticker fan? Then go for curtains or window blinds that can add a classy touch to your walk-in wardrobe. Having window protection also means that your precious clothes and accessories won't suffer the indignation of discolouration due to the sunlight exposure.

### WHAT OTHER CONVENIENCES DO YOU WANT CLOSE AT HAND?

If you can afford the floor space, why not make your wardrobe the hub of conveniences as well?



#### TIPS

» Include a comfortable armchair that you can sink into as you take stock of your collection or set aside an area where you can do your weekly ironing. You can even fit in a mini pedicure/manicure station to truly transform your walk-in wardrobe into your very own paradise. Oh, and don't forget to dress up your floors with a cosy rug or two just to give your feet a nice soft sensation.

LEFT:  
Carlton chair with swivel function, blue Firenze fabric 2262/brushed steel from BoConcept (\$2,405)

### HOW DO YOU PLAN TO MAINTAIN YOUR WARDROBE?

So you've designed your dream wardrobe, but all that is for naught if you don't maintain it on a regular basis. **Is your wardrobe-to-be located right next to the bathroom?** Then you should take note of the moisture that will attack your belongings and inflict them with mildew/mould issues, especially if your wardrobe concept is an open one. In such cases, be sure to scatter a generous number of dehumidifiers to combat the problem.



#### TIPS

Clutter is also a common problem for wardrobes in general, open concept or not. Fortunately, there are tons of organisers out there that you can utilise to keep the chaos from overflowing. Storage units such as boxes for the odds and ends, shelf dividers to organise folded clothes or accessories, and stackable trays are all great options for you to maintain the effortless look that any upscale boutique will be proud of.

Another issue you might face in future is visibility. After all when something is out of sight, it's out of your mind! Instead of using opaque boxes to store your belongings, why not go for clear boxes? They not only keep your things well-organised; they also give a less claustrophobic feeling when you look at your wardrobe.

Last but not least, mount an inspiration cork board to help you keep track of your outfits or go digital with this rather interesting app we found. It's called **STYLEBOOK** and while it can only be downloaded via the iTunes Store for S\$4.98, this handy little app can help you mix and match your very own outfits using whatever that is already in your wardrobe!

**And there you have it; 5 vital questions that every walk-in wardrobe owner should ask themselves before they start the renovations. A good designer will be able to do the important space planning and such like, but it ultimately depends on your personal tastes and lifestyle to really make things work so get started before it's too late! 🌱**

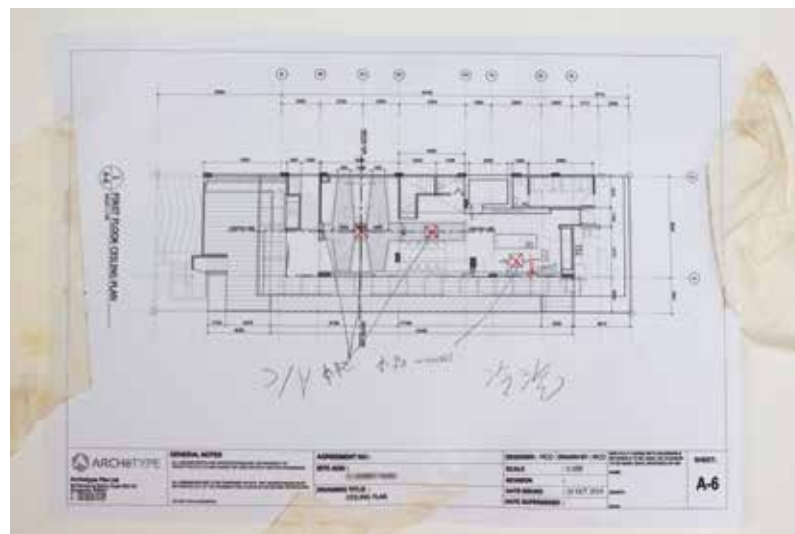


PART 2

# From Nightmare to Dream Home



**Homeowners** : Ms Low and family  
**The Residence** : Semi-detached house @ Sennett Road, 3 levels with basement and roof terrace  
**Total Floor Area** : 6,350 sqft  
**Renovation Period** : Ongoing  
**The Interior Designer** : Louis Chia from ARCHéTYPE Pte Ltd



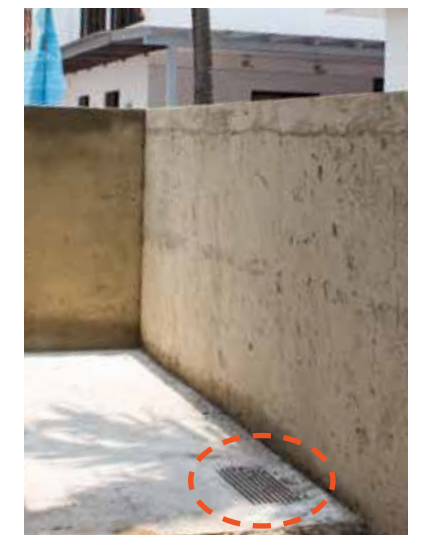
In the last issue, we left Louis Chia rolling up his sleeves to deal with the failed renovation that had ravaged Ms Low's house. As with all major projects, especially one that had been mishandled, this particular project has been meeting roadblocks at every corner. So while the progress was slow, it was steady advancement thanks to Louis' expert management. We know you must be anxious to know more about the major issues that cropped up during the renovation, so let's hop right to it.



## ISSUE #1: UNEXPECTED REINFORCEMENT STEEL BARS

» One of the many additions the homeowners wanted is a water feature that is supposed to stretch all the way from the front porch to the back of the house. This meant that major hacking work was in order, but this soon came to a screeching stop due to the presence of reinforcement steel bars on the front porch and beside the house. "When we started the hacking work on the front porch to create drains," Louis explained, "we discovered some reinforcement steel bars less than one inch down. This posed a significant problem since we can't remove the bars so we had to lift the entire front porch in order to accommodate the water feature."

**OSC Tip:**  
Reinforcement steel bars are an important part of your house structure so discuss with your ID to come up with a viable solution to go around it—no need to sacrifice your dream design at all!

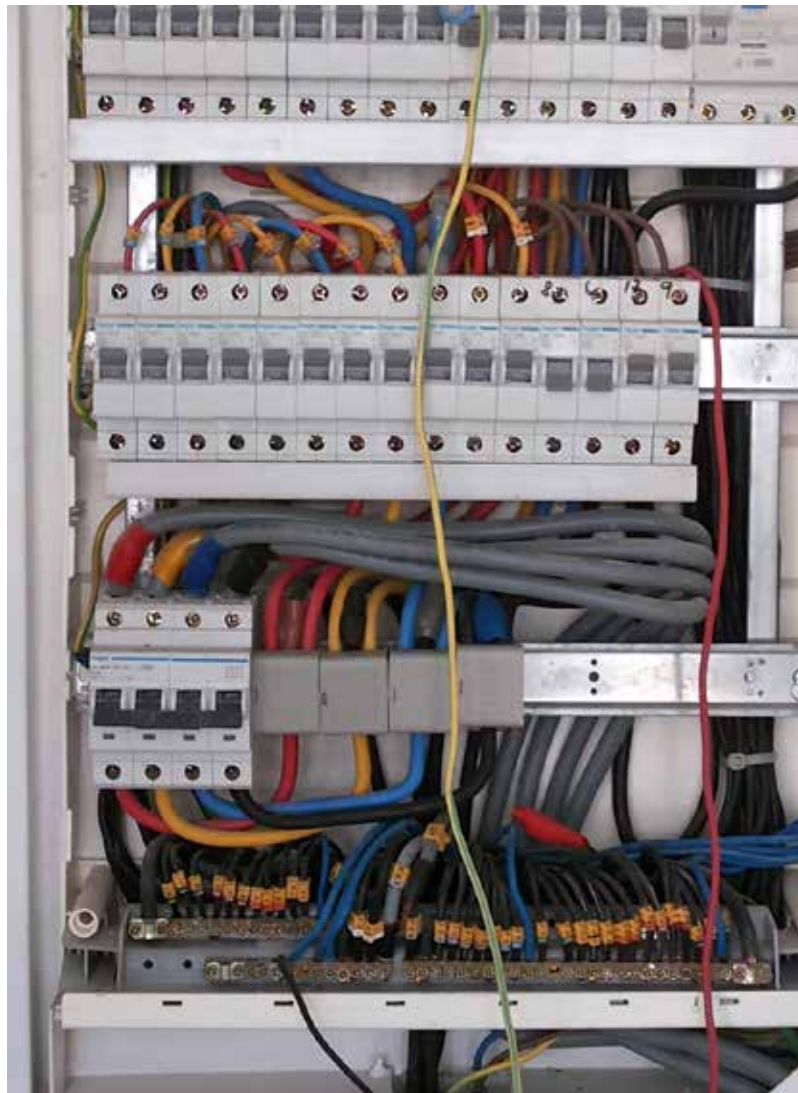
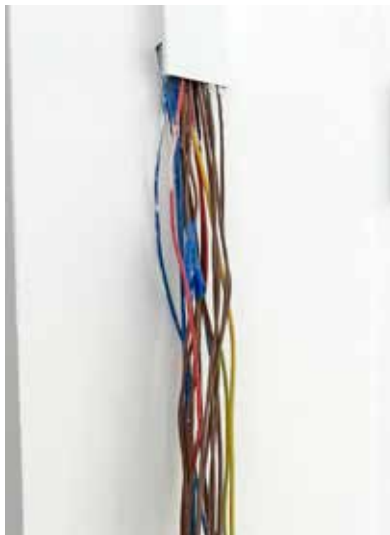


## ISSUE #2: SEWAGE INSPECTION CHAMBER & RAINWATER DRAINAGE

» While clearing the debris (from the previous renovation), Louis and his team discovered a Sewage Inspection Chamber. Since this structure belongs to the PUB and cannot be touched under any circumstances, Louis had to go back to the drawing board and plan another route around it. A rainwater drainage along the way also posed a problem. Any attempts to build the water feature over it will result in future water drainage issues, so Louis had to relocate the rainwater drainage to a more suitable position.

**OSC Tip:**  
Water drainage and ponding issues can potentially destroy your home renovation, no matter how beautiful it is, so do keep a look out for PUB structures or floor traps. They are there for a reason so don't remove them on a whim.





### ISSUE #3: ERRONEOUS WIRING CABLE COLOUR CODE

- » Electrical works are a common part of any new home renovation, but do you know that there is a particular colour code to be adhered to? Just before they started work on the house, Louis discovered that the colours of the existing wiring cables put in place by the previous interior designer (ID) were both obsolete and illegal. You see, colours are used to tell different cables apart. For example: red, yellow and blue used to refer to “Live” cables while black was for “Neutral” cables and yellow-green was for “Earth” cables.
- » Singapore had formally made the transition to the new colour code as set by the European Union (EU) since 1 March 2009, so this means any alteration to the existing electrical works after that had to follow the new colour code. Brown, black and grey now stands for “Live” cables while blue is now the colour for “Neutral” cables.
- » Instead of adhering to the new colour code, the previous ID had put in a confusing network of both new and old colour codes—creating a very dangerous risk for possible death by electrocution in future. As a result, Louis had to overhaul the entire electrical system and recalculate the total renovation cost as this meant additional work and delays.

**OSC Tip:**  
Remember to follow the new colour code if you plan on doing major re-wiring works in your home, or this can result in a sudden and sharp increase in your renovation cost.



### ISSUE #4: CHANGES IN DESIGN

- » In preparation for her new home, Ms Low bought 4 refrigerators and 2 ovens. She also wanted to include a coffee machine, and display spaces for her collection of hard liquor in Magnum bottles as well as crystal accessories. This meant changes to the proposed design for the dry and wet kitchen on the first level, and a reduction in the kitchen workspace. While this may seem minor when compared to the rest of the aforementioned issues, the changes in design contributed to the intermission in between major works.

**OSC Tip:**  
It's important to keep your ID updated about the appliances or furnishing that you had bought so he or she can work your purchases into the proposed home design and modify if necessary. But do note that there will be delays as a result!

**We hope you managed to pick up a tip or two from the renovation process. In the next issue, we shall finally unveil the dream home that Ms Low had been waiting for. We're excited to see it and you should be too, so do stay tuned! 🍋**







An Affordable Way of  
**Completing Your Home Decor**  
with Decorative Mirror



### Bespoke Residential Design

From start to finish, concept to product; our attention to the finest detail and professional yet personable service is our distinguishing streak. We are driven by an unyielding dedication to innovative concepts and fresh perspectives. And most importantly, we truly listen to what you have to say.

We give your home **A Look Of Its Own.**



# Know Your Oven

The epitome of convenience; ovens are ubiquitous in kitchens all over the world. Whether they are used for baking, thawing, cooking or simply to heat up left-overs, ovens come in all shapes, sizes and types. It might get a little confusing though, so follow us as we explore the world of ovens. **By Lilian Wu**



Do you know that the very first food to be microwaved was a candy bar? This was discovered quite by accident because it happened when Percy LeBaron Spencer, an American engineer, discovered that his candy bar had melted in his pocket while standing in front of an active radar set. Although he was not the first one to notice this phenomenon, Percy was the first person to look into it; leading to the eventual invention of the microwave oven. Of course, as cooks will attest, the microwave oven is not the only appliance that can complete the kitchen so let's take a closer look at the various ovens that you can purchase for your home.

### TYPES OF OVENS

In the olden days, the earliest ovens were used to cook food or bake bread. There were special ovens such as furnaces and kilns as well, because people needed ovens that could provide sufficiently high temperatures required in pottery and metalwork. Ancient ovens started off burning wood, then progressed to using coal and kerosene. Gas stoves that integrated ovens into the base came soon after, which eventually led to the development of electric ovens from the late 1920s onwards. Today, we mostly use electric ovens but there are so many varieties that it can get a little confusing for the inexperienced cook, so let's take a look at the few common ones as well as their various pros and cons.

### CONVECTION OVEN

Unlike the microwave oven, the convection oven has a heating element to provide the heat and a fan to circulate the heat evenly around the food.

- PROS**

The steady supply of heat is able to distribute heat more consistently around your food, which means there won't be any hot and cold spots in the oven. The convection oven also takes less time to cook at a lower temperature than a traditional oven, so you get to enjoy energy savings too.
- CONS**

There is a learning curve involved in mastering the use of convection ovens, hence it may take some experimentation with various temperatures for different recipes on your part. They may also be more expensive than the conventional oven.



TOP:  
Deluxe Stainless Steel Electric Oven EEO 421B (42L) from EuropAce (\$599)



TOP:  
Convection Type Oven MC28H5135CK Smart Oven from Samsung (\$399)

### MICROWAVE OVEN

Generally viewed as an economical way of preparing small to medium-sized meals, the microwave oven uses high-frequency electromagnetic waves to agitate the water molecules within your food. This causes the molecules to generate heat from vibrating at the atomic level, which helps to cook the food from the inside out within a shorter time than the conventional oven.

- PROS**

The radio waves within the microwave oven heat only the food and not the container they are in—making the microwave oven highly energy efficient. To be on the safe side though, try to avoid using plastic containers and stick to ceramic or glassware that has been certified as microwave-safe.
- CONS**

The jury is still out on this one, but there are some who think that microwaving meals will strip food of their nutrients. *Ms Sheeba Majmudar*, nutritionist, believes that such a cooking method will make food nutrients no longer available to the human body and suggests using the blender/juicer as an alternative to preparing healthier meals. Others feel that the microwave oven can in fact retain vitamins, minerals and nutrients, if used properly. Incorrect usage may result in uneven heating of food, which means there will be packets of hot spots, and cold spots where bacteria and other micro-organisms can thrive. To ensure a more thorough cooking, it's best to use round and shallow containers or cut the food into smaller chunks.

CONVENTIONAL OVEN

This type of oven has two heating elements, one on the top for broiling purposes and one on the bottom for baking and roasting purposes. To cook the food, heat is radiated from these heating elements so that it surrounds the food.

**PROS** The conventional oven is generally more suitable for preparing large meals, due to the abundance of space and racks within. While the convection oven requires you to master various cooking times and temperature adjustments in order to produce perfectly cooked food, the conventional oven has no such problem.

**CONS** It takes longer than a convection oven to cook food and the heat tends to be stagnant due to the presence of pots and pans that are used to contain the food. Heat typically rises from the bottom so if both top and bottom racks are occupied, pockets of hot and cold air are produced—which may lead to unevenly cooked food.



TOP:  
60cm 9 Function Built-in Oven from Fisher & Paykel (\$2,599)



TOP:  
Toaster Oven OF1608 from Tefal Singapore (\$89.90)

TOASTER OVEN

A smaller appliance than the previously mentioned ovens, the toaster oven is designed to toast different types of bread as well as bake various food such as rotisserie chicken and pizza.

**PROS** The toaster oven makes a useful addition to your kitchen because it can help to heat up your frozen dinner and leftovers or keep food warm during parties. Some toaster ovens even come with a broiling feature. This oven is also more effective in keeping your kitchen cooler, as compared to other types of ovens, and is more energy-efficient in heating up small items of food too!

**CONS** Most models have rather blocky designs that take up valuable real estate in your kitchen. If you're looking to only toast bread at home, then a pop-up toaster is a more viable and cheaper option as they can brown bread better.

STEAM OVEN

While other ovens use hot air to cook or bake food, the steam oven makes use of steam to generate heat within the oven. For this very reason, steam ovens are generally regarded as a healthier option that helps food like vegetables to retain their nutrients, colour and flavour.

**PROS** You can use the steam oven to cook a large variety of food such as meat, vegetables, desserts and even bread. Thanks to the moist heating method, food won't dry out easily and the oven is relatively easier to clean.

**CONS** Since it uses steam, the oven is unable to brown the outer skin of your meat or baking goodies like pies so you may want to purchase a combination oven instead.



TOP:  
Built-in Combination Steam Oven from Bosch (\$3,099)

Other ovens such as the HBC36D754B Built-in Combination Steam oven from Bosch even come with their own self-cleaning and child-proof features! There are really quite a lot to choose from, so be sure to analyse your personal needs before you buy an oven. For instance, how much space do you have in the kitchen and what kind of cooking do you usually do? Some ovens offer a dazzling range of settings that you probably won't use, so remember to get a run-down of the oven's features beforehand or it may lead to years of frustration. 🌱



TOP:  
MC32F606 Smart Oven from Samsung (\$649)



TOP:  
COMBI MCL 32 BIS Oven from Teka, (\$2,600)

Thanks to the advancement in technology these days, you don't have to resign yourself to a single type of oven. Combination ovens are common and even popular among home users because they fulfil a greater number of needs. For example, the **COMBI MCL 32 BIS Oven** from **Teka** has a microwave cum grill feature that not only meets all your microwaving needs, but is able to brown food for a crispier texture. You might also want to check out the **MC32F606 Smart Oven**, a convection type microwave oven from **Samsung**. It uses its very own SILM FRY™ technology to generate heat through microwave, grill and convection heaters to fry food with just a dash of oil.



# Window Dressing

Sometimes we are so occupied with decorating the interiors of our home, we forget that the windows, too, play an important part in the overall theme. But with so many variables influencing your choice of window dressing, how to go about picking the right one? Here are 4 factors to consider. **By Lilian Wu**

## 01

### Privacy

Among the most important reasons for putting any form of window treatment is the desire for privacy, especially when buildings these days tend to be built so closely to one another. If you're getting curtains, then the thickness of the fabric depends on how much privacy you want. The more privacy you want, the thicker your curtains should be. For private spaces such as the bedroom, you may want to consider blackout curtains such as the simple but lovely **WERNÄ block-out curtains** from **IKEA Singapore**. Aside from blocking prying eyes, blackout curtains are great for blocking light, noise (if you're living next to a busy street) as well as reducing heat gain! For absolute darkness in the room, install floor-to-ceiling drapes a few inches past the window length so as to prevent any sunlight from gaining entry through cracks. **(Dark Lilac, Price: \$69 per pair)**



## 02

### Flexibility

Sometimes you want some flexibility in how much sunlight or privacy you want in your room, especially in social spaces like the living room. In this case, then you might want to check out Zebra (otherwise known as Rainbow) Blinds. This option utilises a smart system where you can control both light and style in one single window blind. It also expands on the function of the room; you can create a darker environment for people who want to watch television or work on the computer, or arrange the blinds such that they allow light to enter the room for a brighter ambience. You can choose from a wide range of colours as well, making zebra blinds like these **charming sets** from **Mirage Fabrics & Blinds** truly versatile window accessories to have **(price upon request)**.

## 03

### Colour & Fabric

When it comes to choosing the right colour for your home, the key thing is to match your window dressing to the overall theme. Lighter colours tend to fade more easily in strong sunlight, so the safest bet is go for neutral shades that can blend in with your furnishings. But if you prefer something that pops, then feel free to choose a colour that is inspired by a subtle element in the room e.g. carpet or the colour of your wall so that it enlarges the room visually. As for fabrics, go for something that will hold up well in the long run. Materials like silk and organdie are more prone to sun damage so make sure not to use them in rooms where the sunlight is a constant presence. You can also consider curtains made from eco-friendly materials (e.g. organic cotton) or these **drop dead gorgeous curtains** from **Mirage Fabrics & Blinds**. **(price upon request)**.





04

## Ambience

For social spaces such as the dining area and living room, window dressing plays a vital part in determining the general mood and ambience. Drapes, otherwise known as lined curtains, can infuse the room with a traditional charm especially when you include fabric that cover the top of your windows e.g. swags and tails or valances. If you have rooms with high ceilings, then make use of that trait by dressing your windows with full length drapes along with **swags and tails** like this elegant set from **Spotlight** to bring out the dramatic factor. (price upon request).



Gunning for a less fussy look that is both light and easy on the wallet? Then you might want to opt for Venetian blinds that come with a row of horizontal slats, which can be made from wood, plastic or metal. They are not just sleek and stylish, they also provide a more affordable solution when it comes to making your windows look good and providing that much needed privacy when needed. **Tong Kheng** has a wide range of beautiful **Venetian blinds** for you to choose from, but we think this stylish set will make your inner sanctum pop with much modishness. (price upon request).



05

## Budget &amp; Function

As with everything you get for your home, budget is always an undeniable part of your planning because that will determine the type of window treatments you will get. Window blinds (with vertically or horizontally running parallel slats) are often the least expensive and space-efficient option, which makes them best suited for small rooms. Larger windows tend to do better with curtains and drapes as these can soften the angles of a room or absorb sound to create a quieter environment. Window shades such as **Roman Blinds** from **Tong Kheng** are between window blinds and curtains on the price spectrum but enjoy the best of both worlds in its efficient design and soft touch. The function of a room is just as important. For example, sheer curtains will not do well in a bedroom where darkness is appreciated but is great for adding a romantic appearance to doors or large windows. (price upon request).



# Add a Sophisticated & Elegant Ambience to Your Home



**TONG KHENG**  
Small details. Big difference!

**SAVE MORE NOW!**

**FREE ON-SITE QUOTATION**

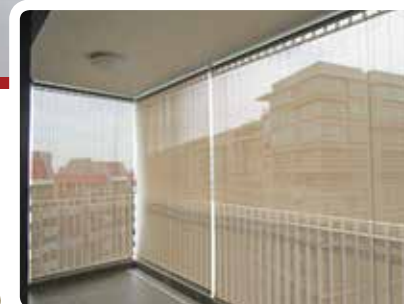
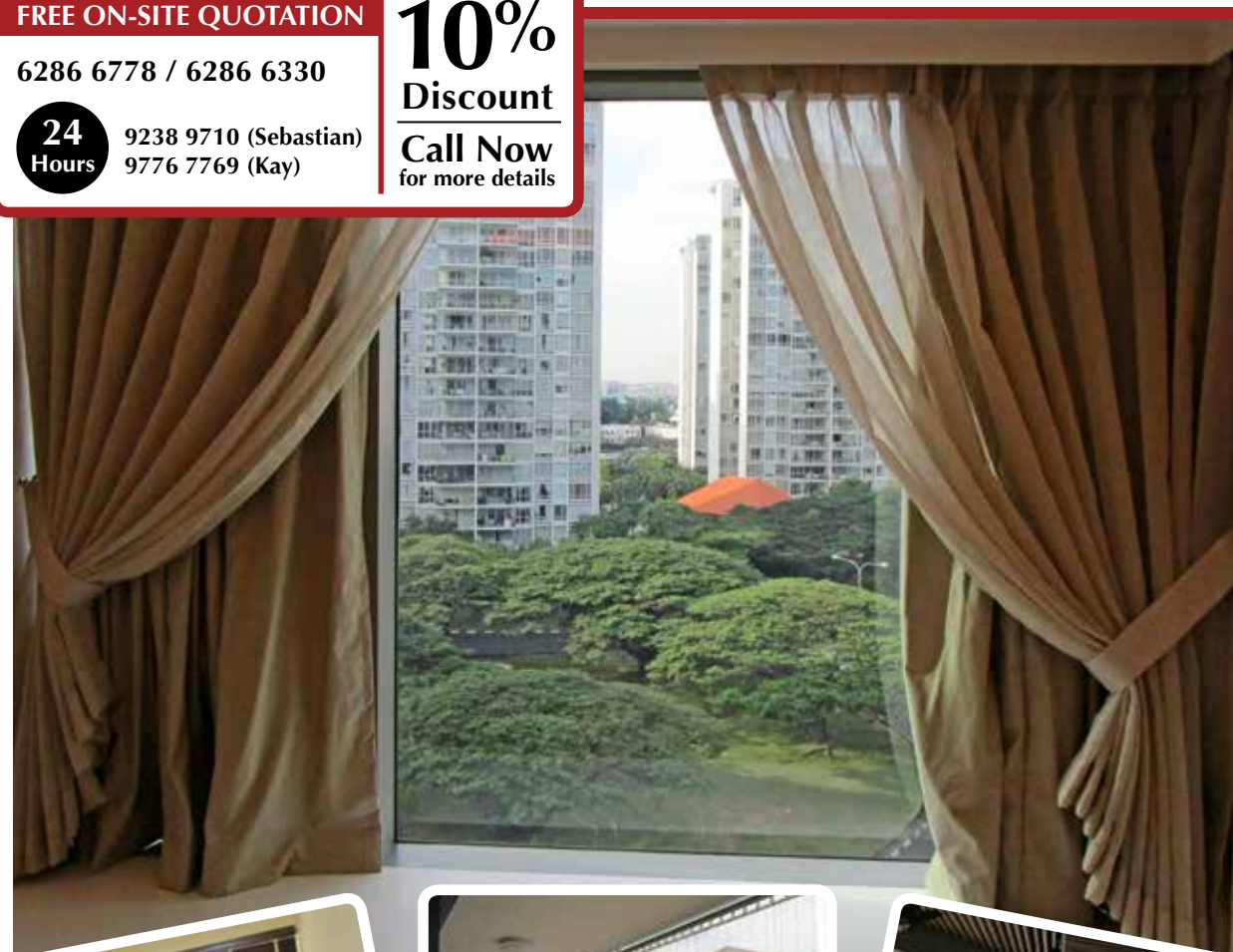
6286 6778 / 6286 6330

**24**  
Hours

9238 9710 (Sebastian)  
9776 7769 (Kay)

**10%**  
Discount

**Call Now**  
for more details



**100% Satisfaction Guaranteed**

**WE SPECIALISE IN:**

- Day & Night Curtains • Blackout Curtains (ideal for bedrooms) • Roman Blinds (creates a classy feel for small windows)
- Roller Blinds (simple yet stylish in design & easy to maintain) • Vertical Blinds (good light control & perfect for large windows) • Motorised Blinds (convenient) • Venetian Blinds • Window Films (can be used on windows of all shapes & sizes)
- Korean Wallpapers (adds excitement to your plain walls & creates a lively environment)

**Tong Kheng Curtains & Blinds Pte Ltd**

14 New Industrial Road, #07-02 Hudson Industrial Building, Singapore 536203 | T 6286 6778 / 6286 6330 | F 6382 2663

E info@tongkheng.com.sg | W www.tongkheng.com.sg | f Tong Kheng Curtains & Blinds Pte Ltd



# Fly Me on a Magic Carpet

Who wouldn't want a magic carpet of their own? Long considered the preferred mode of transportation in ancient folk tales, magic carpets are the very stuff of legends. In the real world, rugs are just as mysteriously handy; they add an instant magical flair to any room and have the ability to completely transform your plain home. **By Lilian Wu**

Contemporary homes bank on sleek designs that are not too fussy, which means these lovely rugs from **Goodrich Gallery** will give your home décor the right modern touch.



**SCION, NAVAJO (100% WOOL, HAND-TUFTED)**  
Price: \$997.67 / \$1,453.75 / 1,995.34  
Size: 140cm(L) x 200cm(W) /  
170cm(L) x 240cm(W) / 200cm(L) x 280cm(W)



**HARLEQUIN ABACUS (100% PURE NEW WOOL, HAND-TUFTED)**  
Price: \$430.75 | Size: 90cm(L) x 140cm(W)



**SCION, MEDINI (100% WOOL, HAND-TUFTED)**  
Price: \$997.67 / \$1,453.75 / 1,995.34  
Size: 140cm(L) x 200cm(W) /  
170cm(L) x 240cm(W) / 200cm(L) x 280cm(W)



• Space Planning & Furniture Layout • Interior Design & Furnishing • Consultation • A&A Projects • Perspective Drawings & Proposal • Project Management •

At **ProjectGuru**, our team of professional interior designers and project managers always strive to deliver what has been promised and committed to our clients, with zero tolerance for poor workmanship and low quality products. We're detail-oriented and are constantly on the lookout for innovative ideas to improve our portfolio in terms of design and functionality.

**Find us at:**

1 Yishun Industrial Street 1, #07-05  
A'Posh BizHub,  
Singapore 768160

**Contact:**

9388 1992  
admin@projectguru.com.sg  
www.projectguru.com.sg



# How to Care for Your Mattress & Pillows to Get Better Sleep

Want to sleep better on your bed? Then you might want to follow these essential tips to keep your mattress and pillows in tip-top condition. **By Lilian Wu**

Whether it's nodding off in the train or in your bed, we spend about 26 years of our entire lifetime on our beauty sleep. But ultimately it's not how much we sleep; it's the quality of sleep that matters. No matter what your age is, sleeping well plays an important part in our physical health and emotional well-being. If you have difficulty sleeping for long periods of time, you run the risk of triggering problems like headaches, irritability, weight gain, poor vision, slower reaction time, and other health complications. That's why it's so important to ensure that our mattress and pillows are in the best condition possible to improve the quality of our sleep. **Here are the essential do's and don'ts that will do your bed and your overall well-being a whole world of good.**



TOP: Original 21 from Tempur® (Queen size: \$4,999)

Prefer to go green as much as possible when it comes to decorating your home? Then you mustn't miss out on these **CB2** rugs, which are made from recycled materials but come in a lively concoction of colours and textures.

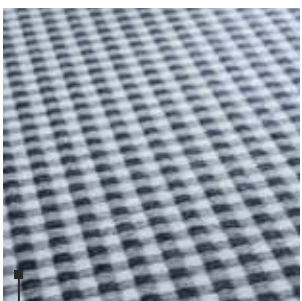
**SWEATER PATTERN SILK-WOOL RUG**  
Price: \$999  
Size: 6'(H) x 9'(W)



**WOVEN CIRCLE JUTE AND RECYCLED COTTON RUG**  
Price: \$399  
Size: 6'(D)

**PANJA RUG**  
Price: \$499  
Size: 5'(H) x 8'(W)

You might be under the impression that rugs are fire hazards; not these beauties from **The Rug Maker**! Anti-dust, anti-static and hardy, these paper yarn rugs are both fire-proof and easy on the eyes. Rug sizes are customisable.



**LUMINA**  
Price: \$1,200  
Size: 1.6m(L) x 2.3m(W)



**SWING**  
Price: \$1,200  
Size: 1.6m(L) x 2.3m(W)

**SOUL**  
Price: \$1,200  
Size: 1.6m(L) x 2.3m(W)



DO'S:



**1 ♡ Use a mattress protector that is waterproof and breathable.** To protect your bed from bed bugs, dust mites, mildew and mould, your mattress protector should be in the form of a zippered case. The same goes for your pillows.



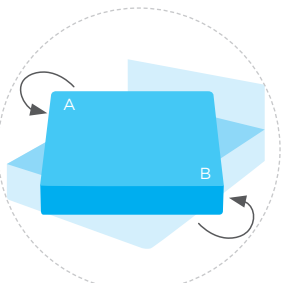
**2 ♡ Vacuum your bed regularly to prevent dust mites** from making merry on your mattress, use the upholstery attachment for a more effective cleaning.



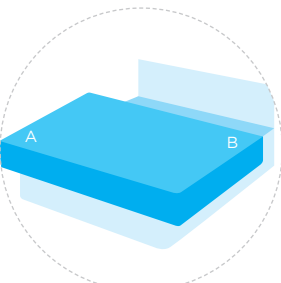
**3 ♡ Does your mattress have an obnoxious odour?** Deodorise it by sifting a handful of baking soda over your mattress and leave it there for about 30 minutes before you vacuum your bed. For a touch of a relaxing scent on your mattress, add a few drops of essential oil to the baking soda before you sift it.



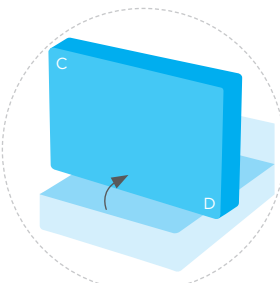
**4 ♡ Make sure your mattress has a strong and stable bed frame;** the centre should be supported to prevent your mattress from sagging in the middle.



**1** Keep the mattress flat, and push at corners A & B in an anti-clockwise direction.

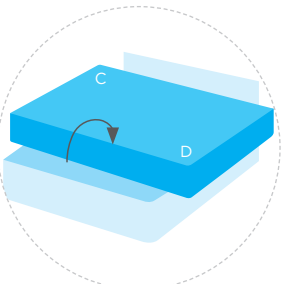


**2** Position the mattress such that it hangs over the foot of bed frame by about 30 cm or more.

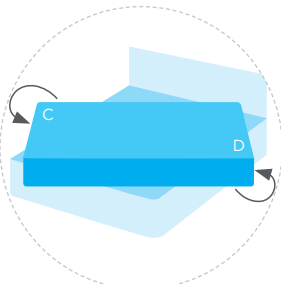


**3** Lift the mattress and lay it on its side, as shown in the picture.

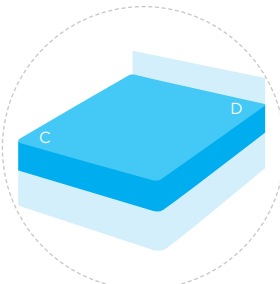
**5 « Flip and rotate your mattress at least 4 times a year** to even out the pressure on it, which will help it last longer. But don't hurt your back in the process! Get someone to help you lift the mattress.



**4** Let the mattress fall towards the headboard of the bed but do it gently, as shown.



**5** Push at corners C & D in an anti-clockwise direction.



**6** And you're done!



**6 ♡ Change your bed sheets regularly,** at least once every 2 weeks. When changing the bed sheets, let your mattress and pillows air for an hour or so to let them “breathe”.



**7 ♡ If you're transporting your bed to another location,** make sure to **store it flat and not on its side or folded.**

TOP: Zero-G Adjustable Bed from TEMPUR Singapore (\$4,199-\$7,799, depending on size)



**8 ♡ Make your bed every morning.** A survey done by The National Sleep Foundation in USA showed that people who make their beds enjoy a more productive day and better quality of sleep at night.

TOP: Marimekko Lompolo Bed Linen from Crate and Barrel (Full/Queen Duvet: \$249.95 & Standard Sham: \$79.95)



**9 ♡ A cool dark room that is clean and tidy as well is essential to a good sleep,** so don't forget to **pay some attention to your bedroom environment.**



TOP: Traditional Pillow from TEMPUR Singapore (\$259 each)

**10 « Wash your pillows in the washing machine at least once a year,** to get rid of all the saliva and sweat that have accumulated in your pillow. For pillows that have yellowed, use distilled white vinegar and your preferred laundry detergent to soak them overnight before setting the wash cycle. After washing, be sure to hang them where they can get plenty of sunlight or put them in the dryer if you have one. Do note that foam pillows such as memory foam cannot be washed in the washing machine. They should be hand-washed in a large pail, bathtub or sink instead.

**11** Spilled something or had an accident on your mattress? Clean it up immediately to prevent any stains from taking up permanent residence. **There are essentially 3 types of stains: Tannin (coloured stains like fruit juices and coffee), Protein (includes urine, blood and milk) and Grease (oil stains) so be sure to use the correct method to treat the stain.** Liquid stains should be blotted with a pressing motion and not rubbed to prevent the stain from seeping further into the fabric. Use a cool wet cloth first, before using a dry cloth to absorb excess moisture. Ensure that the mattress is completely dry before you use it again or you risk growing mould on the bed. To hasten the drying process, you can consider airing it with a stand fan.

Want tips to get rid of common stains? Here are a couple of tips:

**Tannin**

- Create some “dry suds” by mixing ¼ cup of mild detergent powder and 1 cup of lukewarm water with an electrical mixer or egg beater until you get thick frothy suds.
- Use the suds to gently rub into the stain with a sponge.
- Pat the area dry with a dry cloth.

**Protein**

- Use a mixture of baking soda, salt and water to create a paste.
- Rub the paste on the affected area and brush it off after 30 minutes.



TOP: Image by AkzoNobel Decorative Paint

## DON'TS:



**1 ⚠**  
**Avoid sitting on the edge of your bed or sit up in your bed for that matter.** Long periods of weight concentrated in a small area will cause the mattress to sag.



**2 ⚠**  
It's tempting to jump into bed straight after a shower, but avoid doing that until you're completely dry. **Moisture on the mattress will encourage the growth of mould and mildew after some time.**



**3 ⚠**  
**Do not store your bed sheets in plastic containers** as this will trap moisture and encourage mould/mildew to grow.



**4 ⚠**  
**Do not use a hair dryer on wet areas previously stained by blood** as this will encourage stains to "set".

Most of us would rather fall into bed at the end of the day to get some well-deserved shut-eye, but do take the time to care for your mattress and pillows so you can enjoy a better quality of sleep—which will eventually lead to a more productive and hopefully more profitable life! 🌱

TEMPUR®

## Experience Your Best Night's Sleep

What can be a better sleeping material than one that originates from NASA's very own pressure absorbing creation? Here are 3 reasons why investing in TEMPUR products is a decision you'll never regret.

### Conforms To Your Body Shape

TEMPUR mattresses are made from a temperature-sensitive material that accommodates your body shape in the most comfy manner possible. It reduces the discomfort caused by pressure points by redistributing the pressure. This means that you can immediately relax into your most comfortable sleeping position and remain there fully supported, with less tossing and turning throughout the night.

### Gives You Weightless Sleep

Enjoy the luxurious feeling of complete weightlessness at the touch of a button with the TEMPUR Zero-G adjustable bed base. It also allows you to customise the header and footer positions, making it perfect for all kinds of lifestyle activities like relaxing, reading or surfing the internet.



15  
YEAR  
LIMITED  
WARRANTY  
MATTRESS

AUTHENTIC  
TEMPUR  
MATTRESS

CERTIFIED  
SPACE  
TECHNOLOGY  
THE QUALITY MATTRESS AND  
PILLOW RECOMMENDED BY  
NASA AND CERTIFIED BY  
THE SPACE FOUNDATION

All TEMPUR mattresses are

IMPORTED FROM  
DENMARK

### The Perfect Fit For Every Body

No one person has the exact same sleeping preference, which is why TEMPUR has 3 different mattresses collections that give you 3 distinct feels—ORIGINAL, CLOUD and SENSATION.

**Original (Firmer):** For those who prefer a firmer support with outstanding comfort and high conformity. The Original provides the same feel as the TEMPUR material that was initially developed by NASA to relieve the pressure experienced by astronauts during lift-offs

**Cloud (Softer):** Offers an innovative balance of softness and support, thanks to the seamless combination of the TEMPUR material with a newly developed TEMPUR ES (Extra Soft) comfort layer for a feeling of instant weightless relaxation

**Sensation (Easy Movement):** Combining the familiar feel of a traditional spring mattress (but without the springs) with TEMPUR support, it comes with a TEMPUR HM (High Mobility) support layer for easier movement on the mattress surface

So don't wait any longer or continue to sacrifice one-third of your life on unsuitable mattresses, check out one of TEMPUR's showrooms for a mattress that can change your life forever!

TEMPUR Sleep Boutique: 20 Martin Road, #01-01, Seng Kee Building, Singapore 239070 | Tel: 6933 7667

TEMPUR Sleep Haven : 6 Raffles Boulevard, #03-310/311, Marina Square, Singapore 039594 | Tel: 6337 8169

[www.tempur.com](http://www.tempur.com)



# Don't Throw, Recycle Instead!

You know the drill: recycling begins at home. There are any number of things you can reuse or recycle for the sake of preserving Earth's natural resources but other than the usual recycling bins that HDB has scattered throughout Singapore's residential areas, what other avenues can we explore? We unearth a few recycling gems from the NEA website. **By Lilian Wu**

1

## 1..ELECTRONIC GOODS

Aside from the karung guni, you can also recycle your electronic products such as mobile phones, cable modems, laptops and home appliances at places like the Funan DigitalLife Mall, Level 1 Customer Service Counter. This programme will last till the end of this year, so don't forget to drop by with your unwanted electronic goods!

Can't make it by then? **Then you can try one of the 30 recycling bin sites provided by Starhub across Singapore, which includes \*SCAPE (Level 4) and Tampines Mall (#02-26).** For a full list of locations, visit [www.starhub.com/renew](http://www.starhub.com/renew). You can recycle almost any electronic product; but they must be able to fit through the bin's slot which measures 470mm by 120mm.

How about computers that won't fit comfortably into the slot? **Well, fret not for Dell has a recycling programme that allows you to drop off your unwanted personal computers. You can even schedule for a pick-up, but under one condition: the equipment must be of the Dell brand** ([www.dell.com/learn/sg/en/sgcorp1/dell-environment-recycling](http://www.dell.com/learn/sg/en/sgcorp1/dell-environment-recycling)).

**Toshiba also has a similar take-back programme for its Notebooks (PC), Notebook batteries as well as the carton box that once housed your newly purchased Notebook** ([pc.toshiba-asia.com/sg/support/recycle-program](http://pc.toshiba-asia.com/sg/support/recycle-program)).



2

## 2..FLUORESCENT LAMPS AND LIGHT BULBS

Don't throw your unwanted lamps just yet! They may no longer be of use to you, but they can still be recycled via the following venues:

- » **Global Lamp Recyclers:** [lamprecyclers.wix.com/globallamprecyclers](http://lamprecyclers.wix.com/globallamprecyclers) or one of their collection bins at New Sound Electrical (1 Jalan Bukit Merah, #01-4526) and Everyday Lights (717 Yishun St 71 #01-319)
- » **South West Community Development Council:** For residents in the South West District who want to recycle their light bulbs
- » **IKEA:** Accepts used lamps or fluorescent tubes at the lighting department in both IKEA outlets at Alexandra and Tampines.

LEFT:

Image by AkzoNobel Decorative Paint

3

## 3..INK & TONER CARTRIDGES

Don't know what to do with your ink and toner cartridges? Instead of throwing them into the rubbish bin, why not collect and drop them off at one of 13 participating libraries under Project Homecoming—a joint brand and toner cartridge recycling initiative led by Brother, Canon, Dell, Epson and Lexmark, and supported by the National Library Board and National Environment Agency (NEA). And the best thing of all? You can recycle ink and toner cartridges of any and every brand. **Visit any of the following 13 libraries to drop off your ink and toner cartridges:**

- » Ang Mo Kio Public Library, Bedok Public Library, Bishan Public Library, Bukit Merah Public Library, Geylang Public Library, Jurong Regional Library, Jurong West Public Library, Marine Parade Public Library, National Library, Queenstown Public Library, Tampines Regional Library, Toa Payoh Public Library, Woodlands Regional Library.

Other programmes you can explore include the Canon Cartridge Recycling and HP Planet Partners™ Return and Recycling Programme where you can return used toners and ink cartridges to their original brands.

4

## 4..MOBILE PHONES, BATTERIES, ACCESSORIES

If you're the type who change their mobile phone every year or 6 months, chances are you have a far larger collection of phones than you'll like to admit.

With everyone on the chasing the latest phone model, you might have difficulty selling an outdated model or passing to a family member. The next best option? Recycle your spent mobile phones, batteries and accessories with the help of the following programmes:

- » **SingTel Mobile Phone Recycling Programme:** [info.singtel.com/about-us/sustainability/mobile-phone-recycling-programme](http://info.singtel.com/about-us/sustainability/mobile-phone-recycling-programme)
- » **Nokia:** [www.nokia.com/sg-en/support/recycling/](http://www.nokia.com/sg-en/support/recycling/)
- » **ECOMOTO (for Motorola):** [responsibility.motorola.com/index.php/environment/products/recycling/htrmp/Singapore](http://responsibility.motorola.com/index.php/environment/products/recycling/htrmp/Singapore)



If you haven't already explore these venues, then you should check them out. Recycling may not be big in Singapore yet, but you can still do your part in helping our country conserve environmental resources for a better future! 🌱

## Attention all RenoNation fans!

Do you want to get rewarded for your purchase?



Be our **MYSTERY SHOPPER**

Submit your product review, and stand to **win 80% CASH REBATE** of your purchase!

### THE RULES ARE SIMPLE.

1. Purchase 1 of the featured products that you've always wanted for your home.
2. The featured product must be bought within the contest time frame or 1 month before the contest at the most.
3. Write about your experience: the customer service you experienced & product usage after 1 week.
4. Email your **review** with your **name, contact number**, and **product images** to [info@renonation.sg](mailto:info@renonation.sg).

### HOW TO WIN?

We will choose the best written review for each featured product, so be as creative as possible. It's that simple!

Here are a few guidelines to help you write a winning entry:

- Your experience at the retail store & with its salespeople
- First impression of the product
- Product usage
- How well it fulfils its promises

### PRIZE

**80% CASH REBATE**

- Contest starts on 1 November 2014 and will end on 14 December 2014.
- Results will be announced on 31 December 2014.\*

\*Terms & Conditions Apply.

### NOV-DEC FEATURED PRODUCTS:



The heart of your home  
**mayer**

**MAYER DIGITAL AIR FRYER (MMAF9D)**

**PROMO**  
**\$188.00**  
(U.P. \$399.00)

**FREE**  
**Sandwich Maker**  
(worth \$29.90)

- Sensor Touch Control Panel
- 60-minute digital timer
- Rapid air circulation technology that use less than 80% of cooking oil to deep fry food.
- Temperature Setting up to 200°C
- Available at all Mayer Showrooms and authorised retailers.



**Tefal**

**TEFAL ACTIFRY FAMILY (AW9500)**

**PROMO**  
**\$359.00**  
(U.P. \$459.00)

- 60-minute digital timer
- Actifry technology for more even cooking
- Automatic stop & smart timer for total convenience
- Non-stick ceramic coating & dishwasher compatible
- Patented Pulsed Hot Air Circulation System & Automatic Stirring Paddle
- Controlled temperature of 170°C
- Available at major electronic stores & authorised retailers



**PHILIPS**

**PHILIPS AVANCE COLLECTION AIRFRYER XL BLACK OR WHITE (HD9240)**

**\$539.00**

- Digital touch-screen interface
- 60-minute timer
- 5 Cooking Styles – air-fry, grill, roast, bake and gratinate
- 1.2 kilogram capacity
- Preset cooking function
- Time & temperature control
- Patented Rapid Air Technology
- Available at major electronic stores & retailers



**iona**

**IONA AIR ROASTER (GL1118)**

**\$109.90**

- Can be used to air fry, steam, bake, roast, grill, barbecue and for rotisseries
- Bakes and browns food evenly on all sides
- Excellent for low fat cooking
- 60-minute timer
- Temperature settings up to 250°C
- Available at major electronic stores & retailers





# Good Time to Purchase a House

Following what National Development Minister Khaw Boon Wan said in Parliament in August—that the existing property cooling measures will remain, as removing the measures could only lead to an increase in home prices—analysts say that prices are likely to continue falling in Q4 2014 and early 2015.

*“The government has come out to say that the slew of measures implemented would stay for now as they continue to monitor the market. As such, the current state of affairs in the property market is expected to continue into 2015. We expect property prices to continue to moderate by 5 to 8% for 2014 and 3 to 5% in 1H2015. New project sales will continue to lead the market, with resale transactions accounting for only one-third the volume,”* shared Eugene Lim,

Key Executive Officer and Head of Research, ERA Singapore.

Singapore’s Finance Minister Tharman Shanmugaratnam, at a conference hosted by DBS Group in Singapore on July 3, said he expects property prices to fall further, days after data showed home values in the city-state dropped for a third consecutive quarter. *“I don’t think the cycle is over. I think further correction would not be unexpected,”* Shanmugaratnam said.

This could be bad news for speculators, but certainly good news for genuine buyers, as developers have started presenting discount offers to push new projects and clear old stock. Buyers are literally spoilt for choices.

## WATERFRONT LIVING OPTIONS APLENTY

According to a report by Colliers International, prices of homes at the exclusive Sentosa Cove are becoming more affordable, making it a great time for home buyers to consider purchasing a unit on this prime island, especially for those who are seeking a waterfront living experience. The decline in prices can be attributed to fewer foreign investors since the 2008 global economic crisis, and the new property regulations introduced by the government.

According to Colliers, the price difference between condominium apartments in Sentosa and those in the city is getting smaller. About a decade ago, property prices on the island were about 80% higher than those in the Outside Central Region (OCR). Prices were at an all-time high during the first quarter of 2008, when there was a growing market for luxury items and an influx of foreigners interested in buying a property in Singapore. However, the global financial

crisis led to drastically lower prices.

Currently, the price difference between Sentosa and homes in the city is at an all-time low of close to 30%. In fact, some properties in the city are even more expensive than those in Sentosa. Colliers observed that between the first and third quarters of this year, the average price of a 99-year leasehold unit in Sentosa Cove had decreased from \$2,950 psf to \$1,646 psf. Upscale 99-year units in the city, particularly in districts 9, 10 and 11, average at \$1,311 psf.

Colliers also noted that first-time home buyers could expect to own a resale unit at Sentosa for as little as \$2 million. For instance, a few apartments at The Berth and The Oceanfront, each measuring over 1,000 sq ft, were recently sold at prices between \$1.7 and \$1.9 million respectively. That’s even more affordable than similarly-sized upmarket units in the city.



Private condos in Singapore

## A BUYER’S MARKET

In fact, the residential property market in Singapore has turned into a buyer’s market, and analysts conclude that it will remain this way for the rest of the year. So for those who are interested in buying a property, especially first-time home buyers, they are likely to get a good deal.

Sharing her views on the outlook for the property market in Q4 2014, Lee Lay Keng, Director and Regional Head (SEA) of Research, DTZ Debenham Tie Leung (SEA) said, *“Overall, we expect the property market to remain slow in Q4 2014. While iconic projects or projects with better location attributes are likely to continue*

*to attract buyers’ interest, we expect the majority of buyers to adopt a wait-and-see attitude to see if prices will fall even further before they decide to re-enter the market.”*

According to one of SLP’s research reports, the weakness in the property market is also a reflection of the increasing price sensitivity of home buyers. For many middle-class buyers, the TDSR framework had reduced the amount of funds available for property investment and hence, many buyers are limited to buying only one additional investment property each. Therefore they are very selective of their investment choices, said the report. 🍋

# Store-It-Yourself

Space is such a valuable commodity that we constantly look for ways and means to make or buy more space. But storage doesn't always have to be boring, they can brighten up the room or add a point of interest that can be the highlight of your room—like these lovely pieces that you can get for a few songs or more (depends on how well you sing!). **By Lilian Wu**



## SLUMBERSHELVES

from **Spaceman** | Price: from \$11,041

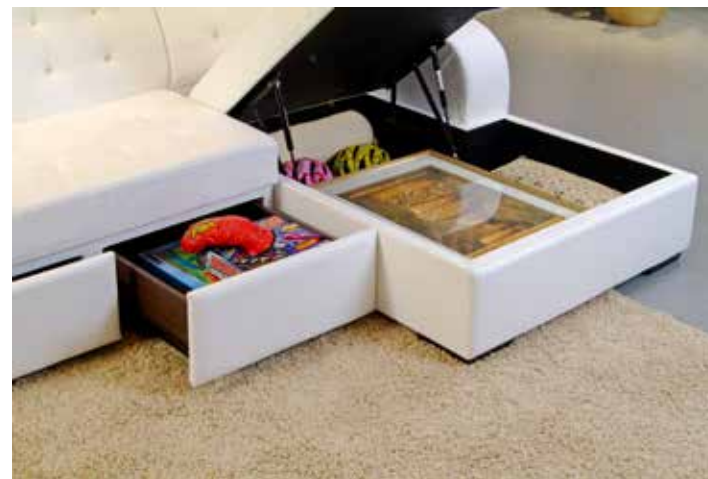
What happens when you really have no space in your tiny shoebox home? Then make the most of what you have with **space-saving furniture** such as these inventive solutions from **Spaceman**. They not only serve a multitude of functions, they also look good while transforming from one role to another! Talk about the perfect multi-tasker! And the most amazing thing of all? This revolving bed system is only 60cm in depth so everything will look as sleek as James Bond's special Martini.



## FISHY RUSTIC WOODEN STORAGE BOX

from **Eledecor Collections** | Price: \$65.90

Far from being fishy, these **rustic wooden storage boxes** from **Eledecor Collections** come with enough compartments to make storing your various trinkets an enjoyable activity. Available in 3 gorgeous colours, or as a tall storage box to take your breath away, their weathered appearances remind one of gently lapping waves and the soft touch of sunshine at the beach. The drawer pulls are not your conventional hardware as well—giving the storage boxes a nautical spin that will complement your seafaring theme at home.



## VESSEL® GLAMOUR SOFA

from **Gorgeous Furnishings** |  
Price: \$3,800 (genuine leather)

You think the **sofa** is just that, a sofa? Well, get ready for storage in places that not even your mother-in-law will suspect! As shoebox apartments become more of the norm in space-hungry Singapore, you need all the storage you can get without sacrificing style and sophistication. This sofa from the **VESSEL®** collection combines gorgeous aesthetics and functionality to bring you the best of both worlds so you never have to sacrifice one for the other.





### MODULAR SHELVING

by **Montana** from **Danish Design** | Price: upon request

How about some flexibility in your storage? Don't be walled in by permanent pieces that only serve to smother your imagination. The **Modular Shelving** by **Montana** from **Danish Design** is a good example of how you can play around with functional cubes to create the storage system exactly the way you want it. Consisting of 42 basic units in 4 different depths and 216 possibilities of combined shelving, who's to say you can't break out of the boring mould that defines mundanity?



### CLEAR STORE ACRYLIC SHOE BOXES

from **Howards Storage World** | Price: from \$15.95

If you're someone who collects shoes as lovingly as a bibliophile does with books, then storage is obviously a big issue for you. But why hide your shoes away in musty boxes or leave them out in the open and vulnerable to humidity attacks when you can store them neatly in stackable **Clear Store Acrylic Shoe Boxes** from **Howards Storage World**? These boxes offer you a clear insight into their interiors so you never have to rummage through your entire collection to find just the right pair of shoes to match your look of the day.



### 3 SPROUTS STORAGE BIN

from **Pupsik Studio** | Price: \$39.90 each

Just like how grown-ups can be so enamoured of a certain kitty that claims it's not a cat, these **3 Sprouts Storage Bins** from **Pupsik Studio** are storage solutions that aim to capture the young in body and soul. Designed with generous dimensions to store anything from laundry to toys, these storage bins are made from sturdy cotton canvas to withstand daily usage. They can also be folded and put away when not in use, so you never have to worry about making room for storage space you no longer need.



# Capturing Life Through Paint

A delicate sculpture valued for its translucent beauty, porcelain has long been highly prized by collectors and homeowners alike. It also has the ability to tell wondrous stories, such as the handcrafted porcelain sculptures from Lladró—many of which were given the paint of life by Rosa Belenguer Pomores. **By Lilian Wu**



TOP, LEFT:  
Great Golden Dragon,  
\$50,000

TOP, MIDDLE:  
Great Dragon in Blue  
Golden, \$46,330

TOP, RIGHT:  
Great Dragon in Blue  
Enamel, \$46,330

You might not know this, but every piece that is exquisitely handcrafted by Lladró comes with an interesting back story. Take the dragons in the **Lladró Great Dragon Collection** for instance; do you know that they symbolise the 5 dragons said to rule over the seasons and divisions of the world? The yellow or golden dragon, in particular, represents the month of summer and is often viewed as a good omen for success in new undertakings and achieving goals. Created from High Porcelain to achieve a gorgeous rendition of the mighty dragon, this piece was painstakingly painted by Rosa with consummate skill and delicate colours from a specially chosen palette. The dragon also comes in 3 other colours (red, blue-golden, and blue enamel) but unfortunately, the red dragon is no longer available due to overwhelming response worldwide.



• Design and Build • Renovation Works (Commercial / Residential) • Additions & Modification • Space Planning •



## LUX DESIGN

48 Toh Guan Road East, Enterprise Hub  
#03-146, Singapore 608586  
+65 6795 2652  
enquiries@luxdesign.com.sg  
www.luxdesign.com.sg





TOP IMAGE:  
Arabian Pure Breed (Black), \$15,000

Not everyone can take on the enormous job of bringing such a majestic dragon to life with paint, due to the twisted posture of the dragon, the details of its whiskers, claws and other parts of the body. Some people may find it a challenge but Rosa is definitely the woman for the job, thanks to her long period of service with Lladró. Having joined Lladró in 1989, Rosa has had many years of working with the specially handcrafted porcelain sculptures that the Spanish company is well-known for. She was assigned to different departments in the years that followed, allowing her to acquire an extensive repertoire of know-how about the various processes. "After the eye-opening experience, I decided to stick to my passion of decorating and in 2000, I was given the opportunity to take on the position of training various Lladró decoration artists in different decorating techniques," Rosa said.

Of course, the Dragon is not the only piece that Rosa has done. There are many collections that she has a hand in, like the Arabian Pure Breed (Black). Just look at how lifelike it looks! Rosa was recently in Singapore for her first ever showcase displaying the fascinating art of painting on High Porcelain pieces so we grabbed the opportunity to ask a few burning questions.



» OF ALL THE DIFFERENT DEPARTMENTS YOU'VE WORKED AT IN LLADRÓ, WHICH IS YOUR MOST FULFILLING EXPERIENCE AND WHY?

For me, the process of instilling life into porcelain sculptures through paint and decoration is beyond doubt the most rewarding task. Moreover, it is during the decoration process where the piece really comes to life, acquires movement, expression and a wealth of details. In short, I always like to say that, "we cover it with a generous cloak".

» HOW DO YOU KEEP YOURSELF RELEVANT AS A DECORATION ARTIST IN THIS DIGITAL AGE?

Lladró is an analogical company in a digital age, a surviving story of which we are really proud. At Lladró, everything is made by hand, and furthermore, everything is done at the headquarters in Valencia, something not many companies can boast of today. At Lladró, there is no rush when it comes to creating and artists reach places where the machines can never go.

» WHAT DO YOU THINK MAKES A GOOD DECORATION ARTIST?

Decoration is not a mechanical work, but calls for good taste, special skill and heightened sensitivity. Perfection can only be achieved through experience, which provides the painter with the confidence to mix glazes and colours and apply them with the necessary precision. For this reason, at Lladró we are always investigating/learning and constantly in 'training mode', which makes working here so stimulating.

» YOU'VE MENTORED OTHER ARTISTS AS PART OF YOUR JOB AS A COORDINATOR FOR TRAINING PERSONNEL, WHAT KIND OF LESSONS DO YOU HOPE TO PASS ON TO THEM?

I hope I'm igniting in them the love for porcelain, the knowledge of how colour breathes life to art, the curiosity to always push one's limits and aim to do better with each sculpture they decorate.

» HOW HAS WORKING WITH OTHER ARTISTS HELPED YOU EXPAND BEYOND YOUR COMFORT ZONE?

The coordinator post is really enriching, because personally speaking, it is highly gratifying to work with people and foster talent; encouraging each artist to develop his or her skills and while learning from them, is a rewarding exchange for both parties.

Rosa's work and other gorgeous porcelain pieces are available at Lladró Boutique (Paragon) and Lladró at Takashimaya. Don't forget to drop by and we promise you won't be disappointed by the stunning details of each porcelain sculpture on display! 🌿



DESIGN COLLECTIVE STUDIO

No.3 Martaban Road  
Singapore 328 628

T: 6259 3356 F: 6259 3376

www.dcollectivestudio.com  
E: info@dcollectivestudio.com



# A Simple Life



**1. Rainshower® Flower Collection, available in 6 attractive floral colour schemes (\$177)**

From GROHE



**2. Analog Table with legs in solid wood and top in walnut (\$3,755)**

**+ Drop Chair with plastic seat and chromed based (\$564)**

From FRITZ HANSEN



**3. Stainless Steel Carafes THV series 1.0L, 1.5L, or 2.0L (Prices starting from \$59)**

From THERMOS® Singapore

**4. RT-AC87U, the world's first AC2400-class dual-band 802.11ac wireless router with a four-transmit, four-receive (4x4) antenna configuration (\$399)**

From ASUS

**5. Bosch Athlet Cordless Handstick Vacuum Cleaner BCH6ATH25 (\$649)**

From BOSCH



## SPACE D E F I N E INTERIOR

318 Joo Chiat Road, Singapore 427569

Tel: (65) 6345 0318

Fax: (65) 6345 0319

Email: [enquiries@spacedefine.com](mailto:enquiries@spacedefine.com)

Web: [www.spacedefine.com](http://www.spacedefine.com)



# Of Bones & Pearls

Are you on the lookout for distinct pieces that add an element of exoticness to your home? Then look no further than these captivating furnishings from **Hacienda Blue**. They are hand-crafted from camel bone or Mother of Pearl using the traditional art of bone inlay, a meticulous skill that has been passed down through the generations—making each finished product a statement piece in itself.



TOP:  
Bone Inlay Side Table in  
a Geometric Pattern –  
available in blue/black/  
green (\$350)

LEFT, TOP:  
Bone Inlay Roman Stool  
in Black Leaf (\$650)

LEFT, BOTTOM:  
Bone Inlay 5-Drawer  
Desk in a Black  
Geometric Pattern  
(\$2,750)



LEFT:  
Mother of Pearl 7-Drawer  
Chest in a Leaf Pattern  
with matching Crown  
Mirrors (Chest: \$3,400 |  
Mirror: \$850)

So what exactly is the **art of bone inlay**?

Well, according to Josephine from **Hacienda Blue**, it's a technique that is specific to the Rajasthan region of India, and one that has been decorating furniture surfaces since Egyptian times. In fact, a total of **three** artisans are employed to work on each single piece of furniture. The first stage involves carving pieces of bone or Mother of Pearl into elaborate shapes before the second artisan attaches these pieces onto a wooden frame in a pre-determined pattern. Last but not least, the third artisan will fill in around the bone or Mother of Pearl with colourful resin as a striking contrast.

Since each piece is hand-crafted, small flaws are inevitable. But such imperfections only add to the furniture's character and innate beauty. There are no dull colours or patterns among the designs featured in **Hacienda Blue's** collection either, so the

furniture will definitely make the perfect centrepiece in a neutral setting. You can even choose to customise your own set of furniture from a large variety of colours and patterns such as **Leaf, Moroccan, Raspberry Leaf and Geometric**.

You might also be confused about the difference between inlaid bone and Mother of Pearl furniture since they look rather similar in the photos. "While the technique used to create each piece is the same, the finished effect is very different," Josephine explained, "with the bone inlaid pieces, you will get a smooth matt finish which gives you a more dramatic contrast with the resin. The Mother of Pearl finish gives a softer, more subdued elegance and lustre to the furniture. Both types of inlay compliment and harmonise with diverse styles."



For sure, the furniture from **Hacienda Blue** will not be content with merely a supporting role in the scheme of things at your home or office. Due to their eye-catching colours and patterns, even a single piece will draw the eye the moment guests enter your abode. Our personal favourite is the Mother of Pearl 7-Drawer dresser with the gorgeous leaf pattern dancing gracefully over the surface. You can even convert it into a vanity dresser of sorts by matching it with the Crown Mirror in a similar pattern and colour. If you're more into trendy designs, then you might want to consider the Side Table in Teal Chevron for its stylish geometric design and tasteful use of one of the most popular colours at the moment. Prefer smaller pieces that you can gift your friends during special occasions or inject life into your dull interiors? Then why not check out **Hacienda Blue's** collection of trays, tray stands, photo frames and boxes? Such accessories won't detract from the overall home décor, but will liven it up with a touch of Oriental mystery instead.



LEFT:  
Trays in Bone Inlay or  
Mother of Pearl (Prices  
start from \$190 each)

TOP, FIRST:  
Bone Inlay 1-Drawer/  
1 Cupboard Side Table in  
Teal Chevron (\$750)

TOP, SECOND:  
Jewellery Boxes,  
available in green, black  
or blue (\$200 each)



Oh, and in case you're wondering about the conservation issues that come with obtaining the materials to create such gorgeous furniture, Josephine stressed that all the bones and Mother of Pearl that are used in their furnishing are acquired from reliable sources. "(With) each shipment, we are supplied with an approved Wild Life Certificate from the Indian Government," she said.

**We're loving how the pieces from Hacienda Blue are rocking the geometric and colour trends with flair! If you're just as enamoured, then don't forget to check out their website at [www.HaciendaBlue.com](http://www.HaciendaBlue.com) for the rest of their collections and contact details! 🍋**



# The Feng Shui Trinity to Better Well-being and Health

Ever had those times when bad things seem to come in an endless parade? Or maybe you might find yourself having difficulty sleeping or even seem to experience a constant state of bad health? The cause of the problem may be closer to home than you think. The problem may literally be your home itself—but don't get alarmed yet! The good news is that you can make big Feng Shui improvements using simple principles or "hacks".

In any home, there are three areas which have a disproportionate influence on the quality and nature of Qi energy within a home. This means that you can focus your initial attention on these three areas and generate big results using simple Feng Shui "tricks". You can also dodge the proverbial bullet and avoid troublesome property altogether if you know what to watch out for!

So, where should you focus your Feng Shui attention? The three most critical areas in the home are...(drum roll)...THE MAIN DOOR, THE KITCHEN, AND THE BEDROOM.



## MAIN DOOR

There is no feature more important than a home's entrance or Main Door. As you might expect, both good and bad (Sheng and Sha) Qi must enter your home through your Main Door, also known as the Qi Mouth. Of course, the name of the game is to encourage an influx of Sheng Qi and minimise Sha Qi. You wouldn't let someone who wished to harm you into your home, so why would you want to allow negative Qi in? A poorly configured Main Door doesn't just let negative Qi in, it actually keeps positive Qi out too.

To assess your Main Door set-up, try standing outside your home and looking in. Imagine Qi flowing into your home. If there are doors to other rooms, sharp corners, stairs or other obstructions close

to the entrance, then these will cause Qi to clash and ruin its dispersion, creating harmful health effects. Contrary to popular belief, mirrors near an entrance are fine—don't worry about them.

Next, stand inside your home and look outside. Remove any obstructive pillars or structures that you can see from this vantage point as these block and impede Qi flow, and may bring Piercing Heart Sha upon your home! If you have a garden, then keep thick foliage away from the entrance to your home as it will dull the "brightness" of any Qi that enters. If your entrance is at the end of an alley or T-Junction, then this will almost certainly lie behind the health problems in your life. A change of location might be in order.



## KITCHEN

Next up, the kitchen. Your kitchen can be thought of as the "heart" of your home. Qi can be captured when you cook and the food you cook, of course, ends up in you, therefore special attention must be paid to the set-up of your stove, so that you may control the nature of the Qi that you absorb from your food. Incorrect stove placement lies behind a wealth of common health and nutritional problems.

If your stove is situated on a kitchen island, then back it up against a hard

wall for an immediate Feng Shui boost. Locating your stove in open space is frowned upon in Feng Shui as it is analogous to having an exposed and vulnerable heart. In addition, make sure your stove isn't opposite a sink as the fire element of your stove will clash with the water element of your sink. If there is an exhaust fan above your stove, then relocate it or remove it for better Qi flow. For added benefits, keep your kitchen as clutter free as possible.





#### BEDROOM

If you feel tired every morning no matter what time you retire to bed, then a few Feng Shui adjustments may hold the key to renewed energy and vitality. Fixing the bedroom based on Feng Shui issues can help restore lacking work performance, boost libido and generate a good mood. Since you spend a third of your life asleep, it's worth-while making sure you're doing so in a supportive environment, and a peaceful, relaxing sleeping environment is conducive to happy living.

The shape of a bedroom is important and here, it's good to keep it simple. Square and rectangular rooms promote the best Qi dispersion. Unusual bedroom shapes or configurations create imbalance,

which is best avoided.

Make sure your bed is pushed up against a solid wall. Sleeping is a Yin activity and a solid feature like a wall can also be considered Yin, so this arrangement is balanced. In the same vein, windows are a Yang feature and having your headboard near a window will draw out more Sheng Qi and lead to restless nights.

If you can't catch a good night's sleep, it could be because your feet are facing the door! In this undesirable situation, Qi will rush in through the door and crash directly into your bed; disturbing your attempts at peaceful sleep. Adjust the position of your bed and you should see an improvement.

You may have heard of shotgun cures which involve the placement of statues, figurines, crystals and other decorative items in certain sectors which promise solutions to your Feng Shui woes. Some may even talk about the colour scheme, furnishings of your home or even the location of your toilet. Know that none of these things really matter unless you are actually into the whole Chinese theme when it comes to décor. At best, they only influence you on a psychological level. So if you are really looking to make a difference, keep an eye out for these three important features of your home.

#### ABOUT DATO' JOEY YAP

Dato' Joey Yap is the leading Feng Shui, BaZi and Face Reading consultant in Asia. He is an international speaker, bestselling author of over 140 books and master trainer in Chinese Metaphysics. He is also the Chief Consultant of Joey Yap Consulting Group and founder of the Mastery Academy of Chinese Metaphysics. 🌱



# JOEY YAP'S FENG SHUI & 乙未 ASTROLOGY 年 FOR 2015



## MAKE THE YEAR OF THE WOOD GOAT YOUR BEST YEAR YET!

Master the Year of the Wood Goat (2015) and ride your way to success!

Joey Yap's wildly successful annual Feng Shui & Astrology™ seminar is back to show you what destiny has in store for you in the coming year.

#### What you'll benefit from the seminar

- Understand how the Wood Goat affects your personal BaZi Astrology chart
- Take advantage of opportunities from the Year of the Wood Goat
- Circumvent disadvantages of the Year of the Wood Goat
- An in-depth look at the financial outlook for 2015
- An examination of your own 2015 personal forecast on health, wealth and love
- Learn which are the auspicious dates of 2015 and what they mean for you
- Gain an awareness of the Feng Shui afflictions for 2015 and how they affect your home
- Harness beneficial energies of the environment throughout the year

#### Your year of good fortune begins here!

**1 FEBRUARY | 2015 (SUN)**

**10am - 5pm** (Registration starts at 8:30am)

**Raffles City Convention Centre,  
Fairmont Ballroom.**

#### Ticket Promo Validity

	1 Ticket	2 Tickets
23 July - 30 Sept 2014	\$68	\$88
1 Oct - 31 Dec 2014	\$88	\$128
1 Jan - 17 Jan 2015	\$128	\$228

**Grab Your Tickets Now!** Tel : + 603 - 2284 8080

Email : [seminar@masteryacademy.com](mailto:seminar@masteryacademy.com)

[www.masteryacademy.com/FSASEMINAR](http://www.masteryacademy.com/FSASEMINAR)

Official Media Partner:







Image by Lamitak (Bryson Tobias Steel - DXN4329M)

## Tobias Steel

in the detail



Seriously smooth Tobias Steel blends the flawlessness of a factory finish with the random beauty of the natural weathering process. Inspired by the tonal composition of Cologne Cathedral's aged metal doors, this intricate steel design features a mesmerising corrosion pattern with colouration effects that seem to develop infinitely before your eyes. A world of detail emerges as you peer into the surface, making this a design that will command attention whether viewed up close or from afar.



11 Woodlands Close #06-04,  
Woodlands 11, Singapore 737853  
+65 6339 4668 or +65 6339 3878  
+65 6339 0083  
[enquiry@acespacedesign.com](mailto:enquiry@acespacedesign.com)  
[www.acespacedesign.com](http://www.acespacedesign.com)



STOCKIST

**A**

**ASUS**  
www.asus.com/sg

**B**

**BOCONCEPT**  
www.boconcept.com/zh-sg

Paragon  
290 Orchard Road,  
#04-01/02/03  
Singapore 238859  
6736 0777

**BOSCH**  
www.bosch-home.com.sg

**C**

**CB2**  
www.cb2.com

**CRATE AND BARREL**  
www.crateandbarrel.com

ION Orchard  
2 Orchard Turn,  
#04-21/22, #03-25  
Singapore 238801  
6634 4222

**D**

**DANISH DESIGN**  
www.danishdesignco.com

Harbourside Showroom  
Harbourside Building 1, #01-02  
No. 1 Boon Leat Terrace  
Singapore 119843  
6270 8483

**DULUX**  
www.dulux.com.sg/en

**E**

**ELEDECOR COLLECTIONS**  
www.eledecors.com

**EUROPACE**  
www.europace.com.sg

**F**

**FISHER & PAYKEL**  
www.fisherpaykel.com/sg

**REPUBLIC OF FRITZ HANSEN  
STORE SINGAPORE**  
www.watelier.com

W.Atelier Pte Ltd  
75 Bukit Timah Road, #01-01/02  
Singapore 229833  
6270 8828

**G**

**GOODRICH GALLERY**  
www.goodrichglobal.com

**GORGEOUS FURNISHINGS -  
VESSEL**  
www.gorgeous-furnishings.  
com.sg

**GROHE**  
www.grohe.com

**H**

**HACIENDA BLUE**  
www.haciendablue.com

**HAFELE SINGAPORE**  
www.hafele.com.sg

**HOWARDS STORAGE WORLD**  
www.hsw.com.sg

**I**

**IKEA SINGAPORE**  
www.ikea.com/sg

IKEA Alexandra  
317 Alexandra Road  
Singapore 159965

IKEA Tampines  
60 Tampines North Drive 2  
Tampines Retail Park  
Singapore 528764

**M**

**MIRAGE FABRICS & BLINDS**  
www.mirageblind.com

Blk 3014 Bedok Industrial  
Park E, #02-2158  
Singapore 489980  
6282 3282

**P**

**PUPSIK STUDIO**  
www.pupsikstudio.com

**S**

**SAMSUNG**  
www.samsung.com/sg/home

**SPACEMAN**  
www.spaceman.com

**SPOTLIGHT**  
www.spotlight.com.sg

Plaza Singapura  
68 Orchard Road, Level 5  
Singapore 238839  
6733 9808

**T**

**TEFAL**  
www.tefal.com

**TEKA SINGAPORE**  
www.teka.com.sg

UE Square  
83 Clemenceau Avenue, #01-33  
Singapore 239917

**TEMPUR**  
www.sg.tempur.com

Tempur, Sleep Boutique  
Seng Kee Building, #01-01  
6933 7667

Tempur, Sleep Haven  
Marina Square, #03-310/311  
6337 8169

**THE RUG MAKER**  
www.therugmaker.com.sg

Mapletree Industrial  
1093 Lower Delta Road, #02-20  
Singapore 169204  
6270 2823

**THERMOS**  
www.thermos.com

**TONG KHENG CURTAINS &  
BLINDS**  
www.tongkheng.com.sg

SUBSCRIBE NOW

**6 ISSUES @ \$20**

**MODES OF PAYMENT:**  
Cheque payment to be crossed and made payable to Offsprings Group Pte Ltd  
143 Cecil Street, #03-01, GB Building, Singapore 069542

**LET'S CELEBRATE!**

**THE POWER OF MIRRORS**

Stay updated with the latest home design trends and stories with RenoNation sent right to your doorstep!  
**Email your name, address, email and contact numbers to [info@renonation.sg](mailto:info@renonation.sg) with "Magazine Subscription"** in the subject line. Please allow 14 working days for your order to be processed. Alternatively you can sign up for our bi-weekly newsletter on [RenoNation.sg](http://RenoNation.sg) to receive the e-magazine in your inbox!

**CELEBRATE 1 YEAR WITH RENONATION MAGAZINE!**

Treat your loved ones to a magazine you know they will enjoy—a 1-year gift subscription to RenoNation! With every gift subscription, you'll receive a **RenoNation umbrella and tote bag + 2 complimentary issues** from us! Simply email us at [info@renonation.sg](mailto:info@renonation.sg) with the personal details for you and the loved one you're gifting our magazine to.

**SPECIAL OFFER**

**Terms and conditions:**  
**This subscription is only valid for the print edition.** • Your subscription will commence with the next issue after payment. • The subscription is applicable to Singapore addresses only. • Subscriptions are non-refundable and non-transferable. • Please allow about four to six working days from the magazine release date for postage. • Subscriber information may be used in future marketing or promotional activities. • For subscription enquiries, call +65 6225 3132 or email [info@renonation.sg](mailto:info@renonation.sg).



Protect What Matters Most to You

Enjoy peace of mind with ADT's advanced home and personal security solutions

We know that home safety and security for our loved ones are top priorities in life. That's why we offer a full suite of customisable home security solutions designed to provide your household with comprehensive protection. With our 24/7 monitoring service and dedicated team of trained professionals, you can rest assured that your family and property are well-protected from burglary, fire, smoke, duress and medical emergencies.

Our Strategic Brand:



**Hotline:** 1800 881 1111    **Email:** [adt\\_enquiries@tycoint.com](mailto:adt_enquiries@tycoint.com)    **Website:** [www.adt.sg](http://www.adt.sg)

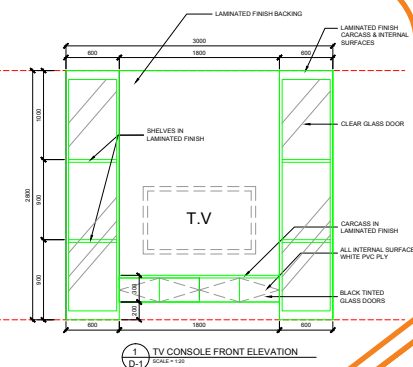
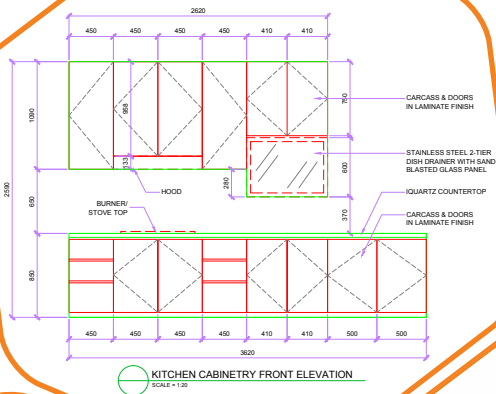
Safer. Smarter. Tyco.™





CONCEPTUALISE • VISUALISE • ACTUALISE

Creating Unique Homes With Innovative Designs



**ARCHéTYPE Pte Ltd** is an interior design studio that prides itself in creating spaces with a lifestyle edge. Our team of award-winning and experienced interior designers and project managers believe in providing our clients with seamless creative design solutions that transform any space stylishly. We specialise in public housing, private homes, large-scale residential developments and commercial projects.



**ARCHéTYPE**